



# Reactor® E-8p

Portable Plural-Component Sprayer  
for No-Heat Polyurethane Foams

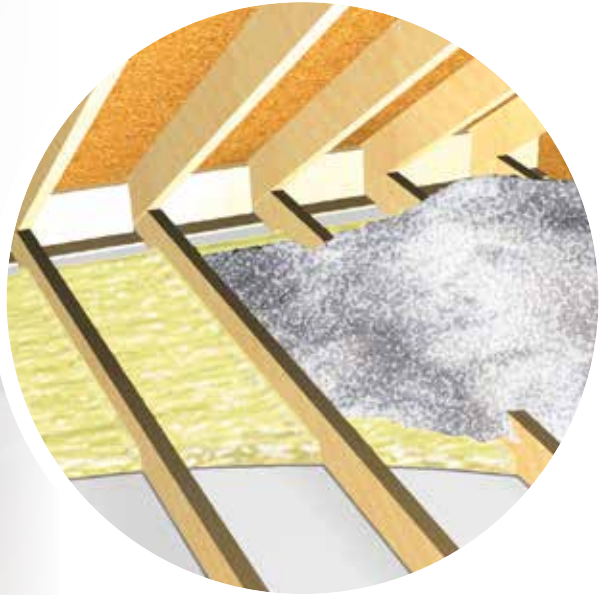


PROVEN QUALITY. LEADING TECHNOLOGY.

# Build Your Business by Re-insulating Existing Homes

## Here's your opportunity

Homeowners are looking for ways to cut energy costs. Proper sealing and insulating is a long-term cost-effective way to make their homes more energy-efficient. With over 86 million existing homes in North America that require better insulation<sup>1</sup>, this is a great opportunity for you to build your business.



*Use the Reactor E-8p in attics to create an air barrier under blown-in insulation (above), or to seal and insulate rim joists (below).*



*A 2005 National Institute of Standards and Technology study<sup>2</sup> indicates that an air barrier system could reduce air leakage by up to 85%, and realize a 40% savings in natural gas, and a 25% savings in electricity.*



## The Reactor E-8p is the solution

The Reactor E-8p Portable Plural-Component Sprayer is among the first portable, professional foam insulation systems that produces foam for air-sealing existing homes. In fact, it's the first system that's designed specifically for new no-heat polyurethane foam formulations. It produces a proven air-seal solution that's in demand by homeowners who want energy-efficient homes.

### Expand your business

Become more competitive in today's market with equipment designed for the remodeling or small foam job. Whether you're expanding your existing insulation application opportunities or just starting your business, the Reactor E-8p provides a quick return on investment. As a touch-up system, the Reactor E-8p frees up larger rigs for medium and large jobs while enabling you to finish the job affordably.

### Portable, lightweight and easy to move

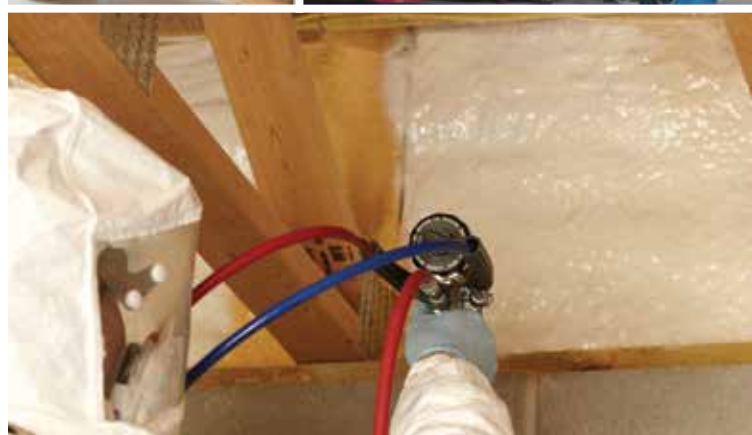
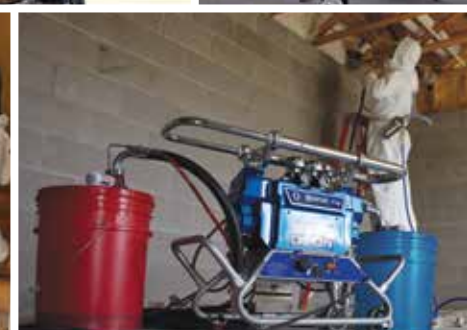
Haul it in your van, pickup or car. Take it anywhere – through narrow doorways or halls, even up narrow stairways of older homes. The Reactor E-8p's compact design easily fits in tight areas so you can spray foam with ease. Since no heaters are required, the Reactor E-8p is small, lightweight and compact.

### Designed for existing home environments

The compact design is unobtrusive. Simply plug it into a standard residential outlet. Material is drawn from handy no-spill five-gallon pails. No feed pumps needed.

### Applications

- Rim joists in existing homes
- Attics in existing homes – *as an air barrier under blown-in insulation*
- Alternative to froth kits
- Backup system for spray rig owners
- Touch-up projects in tight areas
- HVAC spray sealing of approved duct work
- Roofing applications – *patching, applying select roofing adhesives*



# Best Choice for Portability and High-Quality Foam

## Telescoping Handle

Easy handling from your vehicle to the home

## Built-in Suction Lines

No need for feed pumps



## Pressure Gauges

Easy to read gauges ensure you're spraying on-ratio.



## Holster for Suction Lines

Keeps tubes in place during transport; prevents drips.



## Desiccant Air Dryer

Allows air to be drawn into pail; protects material from contamination.

## Lightweight and Portable

Easy to maneuver up and down stairs, wherever the job goes – only 95 lb (43 kg)

## Alarm / Status Indicator

Shuts down unit if off-ratio conditions exist – assures good quality foam at the job site





### *Pressure Balance Valves*

Quick and easy balancing of system pressures enables correct start-up

### *Threaded Bucket Spout Connection*

Keeps your connection secure and prevents spills

### *Electric Motor*

Proven motor performance and reduced operating costs; plugs into a standard residential outlet

### *Easy Controls*

Intuitive start/stop with single knob operation

### *Spray Guns*

Uses standard Graco Fusion or P2 Guns; provides consistent spray patterns

### *Non-heated Hose*

Easy to maneuver – 70% lighter than standard Reactor heated hose



***Carrying Handle/Hose Wrap***  
Easy to transport, convenient hose storage.



# Reactor E-8p: An Economical Alternative to Froth Kits

## A quick return on your investment

Many small projects that are ordinarily completed with froth kits can now be accomplished more economically with the Reactor E-8p and no-heat polyurethane foams. In fact, froth kits can cost up to three times the cost of five-gallon pails of no-heat foam polyurethane materials.

ANNUAL MATERIAL SAVINGS WITH E-8p				
	SMALL FROTH KIT	LARGE FROTH KIT	NO-HEAT FOAM 5-GAL PAIL SET	FORMULA
PACKAGE SIZE	39 lb	118 lb	80 lb	
AVERAGE COST PER KIT	\$374	\$828	\$320	A
TYPICAL YIELD (in board feet)*	170	510	450	B
COST PER BOARD FOOT	\$2.20	\$1.62	\$0.71	$C = A / B$
AVERAGE SIZE JOB (in board feet)	850	850	850	D
FOAM COSTS OF AVERAGE SIZE JOB	\$1,870	\$1,380	\$604	$E = C \times D$
ESTIMATED NUMBER OF JOBS ANNUALLY	50	50	50	F
ANNUAL MATERIAL COST	\$93,500	\$69,000	\$30,200	$G = E \times F$
ANNUAL MATERIAL SAVINGS WITH E-8p	\$63,143	\$38,643		$H = G - \text{ANNUAL MAT'L COST OF NO-HEAT FOAM}$

\* Per The Dow Chemical Company for Froth Kits: The theoretical yield has become an industry standard for identifying certain sizes of two-component kits. Theoretical yield calculations are done in perfect laboratory conditions, without taking into account the loss of blowing agent or the variation in application methods and types. This chart is an example only and should be reviewed for each application. Dollar savings are not guaranteed. Actual results may vary.



**Ready** - Easy to transport to the job site.



**Set** - Get ready to spray in a matter of minutes.



**Spray** - Ideal for attics and rim joists.

# Technical Specifications and Ordering Information

## Technical Specifications

<b>Max fluid working pressure</b> .....	2000 psi (140 bar, 14 MPa)	<b>Fluid outlets</b> .....	Component A (ISO):-5 JIC male Component B (RES):-6 JIC male
<b>Electrical requirements</b> .....	Model 259082: 120 Vac, dedicated 15 A-circuit, 1 phase, 50/60 Hz	<b>Fluid circulation return</b> .....	Component A (ISO):-5 JIC male Component B (RES):-6 JIC male
<b>Max output</b> .....	12 lb/min (5.4 kg/min) at 340 cycles/min	<b>Hose markings</b> .....	A side: Red; B side: Blue
<b>Max chamber size</b> .....	.00 (orifice size 0.029)	<b>Wetted parts</b> .....	Aluminum, stainless steel, carbon steel, brass, carbide, chrome, chemically resistant o-rings, PTFE, ultra-high molecular weight polyethylene
<b>Output per cycle</b> (A and B) .....	.00352 gal (0.0133 liter)	<b>Dimensions</b> (Bare sprayer) .....	35 L x 24 H x 15 W in (89 x 61 x 38 cm)
<b>Sound power</b> (per ISO 9614-2) .....	94.4 dB(A) at 2000 psi (140 bar, 14 MPa) 0.5 gpm (1.9 lpm)	<b>Weight</b> (Bare sprayer, no hose, no gun) .....	95 lb (43 kg)
<b>Sound pressure</b> (1 m from equipment) .....	84.5 dB(A) at 2000 psi (140 bar, 14 MPa) 0.5 gpm (1.9 lpm)	<b>Operation manual</b> .....	3A1602A

For best results, use specially formulated no-heat polyurethane foam and follow chemical manufacturer's application recommendations.

## Ordering Information

### Sprayers — Packages include gun and 35 ft (10.6 m) of non-heated hose

<b>259082</b>	Bare proportioner, 240V, 15 amp cord	<b>259083</b>	Bare proportioner, 240V, 10 amp cord
<b>AP9082</b>	Proportioner package with Fusion AP Gun (246100) and non-heated hose (24M653)	<b>AP9083</b>	Proportioner package with Fusion AP Gun (246100) and non-heated hose (24M653)
<b>CS9082</b>	Proportioner package with Fusion CS Gun (CS00RD) and non-heated hose (24M653)	<b>CS9083</b>	Proportioner package with Fusion CS Gun (CS00RD) and non-heated hose (24M653)
<b>P29082</b>	Proportioner package with P2 Gun (GCP2R0) and non-heated hose (24M653)	<b>P29083</b>	Proportioner package with P2 Gun (GCP2R0) and non-heated hose (24M653)

### Accessories

<b>119974</b>	Dryer, desiccant	<b>24J766</b>	Adapter, spout, pour, assembly B
<b>249855</b>	Repair kit, displacement pump; includes seals, balls, bearings, intake valve seat	<b>16H615</b>	Tube, recirculation
<b>246010</b>	Suction hose, pump to 5 gal pail	<b>249633</b>	Hose bundle, 35 ft (10.6 m), non-insulated
<b>24J155</b>	Adapter, spout, pour, assembly A		

### Guns — Refer to brochure 300615 for complete spray gun listings, plus wide and flat chamber sizes

<b>246099</b>	Fusion AP: AR2020 (000) mix chamber (0.020 orifice size)	<b>GCP2R0</b>	P2: GC2500 mix chamber with GC2510 tip (0.029 orifice size)
<b>246100</b>	Fusion AP: AR2929 (00) mix chamber (0.029 orifice size)	<b>CS20RD</b>	Fusion CS: RD2020 (000) round mix chamber (0.020 orifice size)
<b>GCP2RA</b>	P2: GC250A mix chamber with GC251A tip (0.020 orifice size)	<b>CS00RD</b>	Fusion CS: RD0000 (00) round mix chamber (0.029 orifice size)



## ABOUT GRACO

### PROVEN QUALITY. LEADING TECHNOLOGY.

Founded in 1926, Graco is a world leader in fluid handling systems and components. Graco products move, measure, control, dispense and apply a wide range of fluids and viscous materials used in vehicle lubrication, commercial and industrial settings.

The company's success is based on its unwavering commitment to technical excellence, world-class manufacturing and unparalleled customer service. Working closely with qualified distributors, Graco offers systems, products and technology that set the quality standard in a wide range of fluid handling solutions. Graco provides equipment for spray finishing, protective coating, paint circulation, lubrication, and dispensing sealants and adhesives, along with power application equipment for the contractor industry. Graco's ongoing investment in fluid management and control will continue to provide innovative solutions to a diverse global market.

## GRACO LOCATIONS

### MAILING ADDRESS

P.O. Box 1441  
Minneapolis, MN 55440-1441  
Tel: 612-623-6000  
Fax: 612-623-6777

### AMERICAS

#### MINNESOTA

Worldwide Headquarters  
Graco Inc.  
88-11th Avenue N.E.  
Minneapolis, MN 55413

### EUROPE

#### BELGIUM

European Headquarters  
Graco N.V.  
Industrieterrein-Oude Bunders  
Slakweidestraat 31  
3630 Maasmechelen,  
Belgium  
Tel: 32 89 770 700  
Fax: 32 89 770 777

### ASIA PACIFIC

#### AUSTRALIA

Graco Australia Pty Ltd.  
Suite 17, 2 Enterprise Drive  
Bundoora, Victoria 3083  
Australia  
Tel: 61 3 9468 8500  
Fax: 61 3 9468 8599

#### CHINA

Graco Hong Kong Ltd.  
Shanghai Representative Office  
Building 7  
1029 Zhongshan Road South  
Huangpu District  
Shanghai 200011  
The People's Republic of China  
Tel: 86 21 649 50088  
Fax: 86 21 649 50077

#### INDIA

Graco Hong Kong Ltd.  
India Liaison Office  
Room 443, Augusta Point  
Regus Business Centre 53  
Golf Course Road  
Gurgaon, Haryana  
India 122001  
Tel: 91 124 435 4208  
Fax: 91 124 435 4001

#### JAPAN

Graco K.K.  
1-27-12 Hayabuchi  
Tsuzuki-ku  
Yokohama City, Japan 2240025  
Tel: 81 45 593 7300  
Fax: 81 45 593 7301

#### KOREA

Graco Korea Inc.  
Shinhan Bank Building  
4th Floor #1599  
Gwanyang-Dong, Dongan-Ku,  
Anyang-si, Korea 431-060  
Tel: 82 31 476 9400  
Fax: 82 31 476 9801

## SALES/ DISTRIBUTION/ SERVICE

Call today for product information or to request a demonstration.

**877-84GRACO** (1-877-844-7226) or visit us at [www.graco.com](http://www.graco.com).

Graco Inc. is registered to I.S. EN ISO 9001

North America  
Customer Service  
800-328-0211  
Fax 877-340-6427